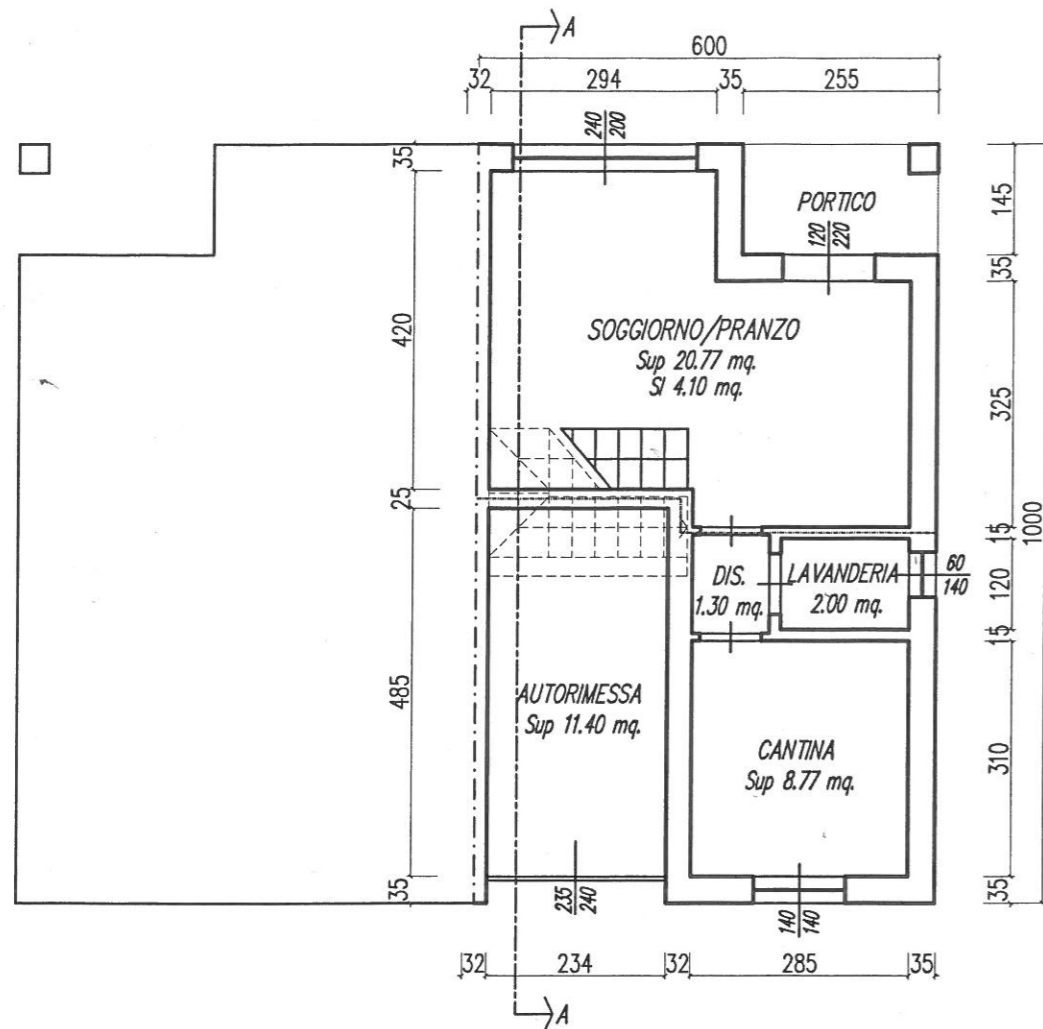
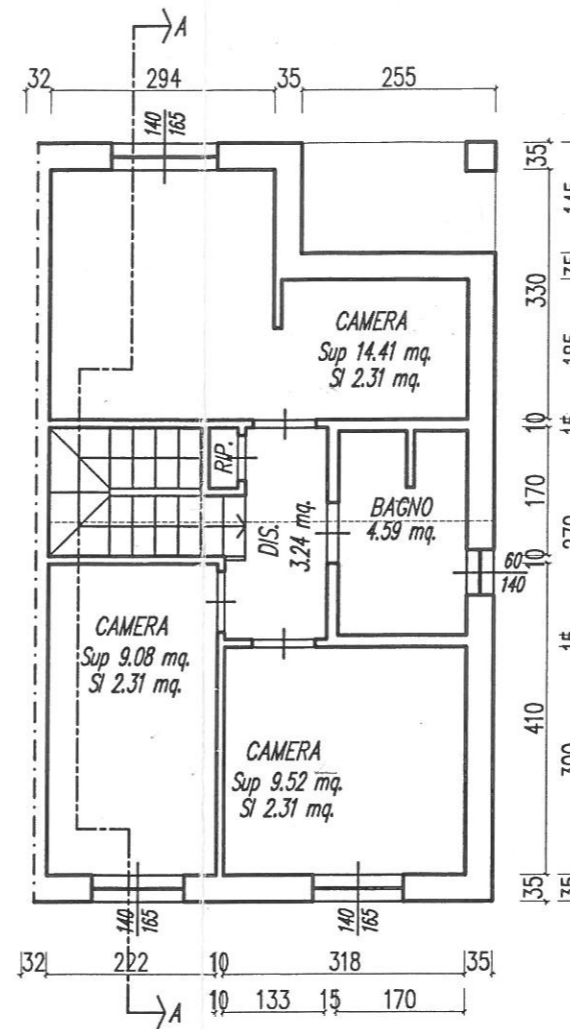


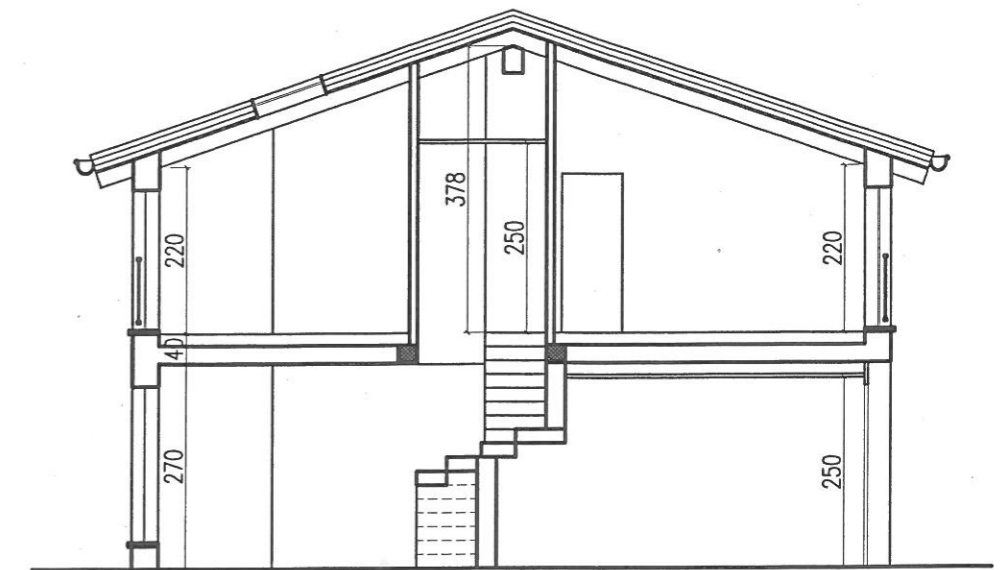
PIANO TERRA



PIANO PRIMO



SEZIONE "A-A"



 VANI CON CONTROSOFFITTO - H INTERNA 2.50 ml

PIANO TERRA	SUPERFICIE UTILE	VOLUME
	25.85	77.58
PIANO PRIMO	SUPERFICIE UTILE	VOLUME
	56.31	168.48
TOTALE	SUPERFICIE UTILE	VOLUME
	82.16	246.06